

# Full-Screen PV Module

## Precautions & Installation Procedure



Full-Screen PV Module is frontside frameless design, allowing the rainfall to wash away any dust easily even in the case of a small installation angle.

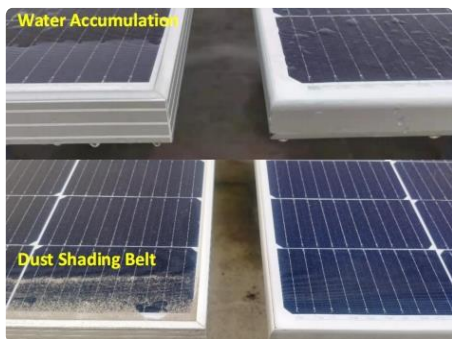


Fig. 1 – Comparison of water accumulation and dust build-up in regular PV module VS. Full-Screen PV module

As the DAH Solar Full-Screen PV modules do not have a frame edge on the front side of the panel, extra care should be made in the packing and unpacking of the panels to avoid glass breakage when delivered.

**35mm mid/end-clamps**, such as those used with standard when mounting standard frame panels, can be used to mount Full-Screen panels but must use the rubber pads that come provided with the panels. The rubber pads are specially designed by the factory for use with Full-Screen panels and have been tested and rated for 30 years of use.

### Rubber pad installation process:

1. Remove the rubber pad from the plastic bag.
2. Peel back the adhesive on the back of the rubber pad and attach the rubber to the clamp. Firmly press the pad and clamp together with both hands to ensure the rubber pad is secure. Please use **35mm mid/end-clamps**.
3. Use the clamp with the rubber to install the Full-Screen PV modules.



Fig. 2 – Full-Screen rubber pad



Fig. 3 – Sticking the rubber pad onto the clamp



Fig. 4 & 5 – Installation of Full-Screen panels using mid/end clamps with rubber pad(s) attached

### Edge fixture A:

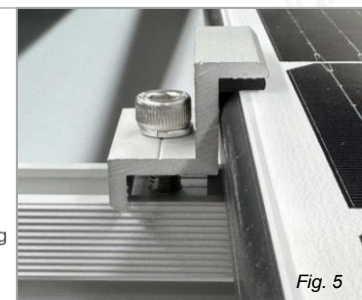
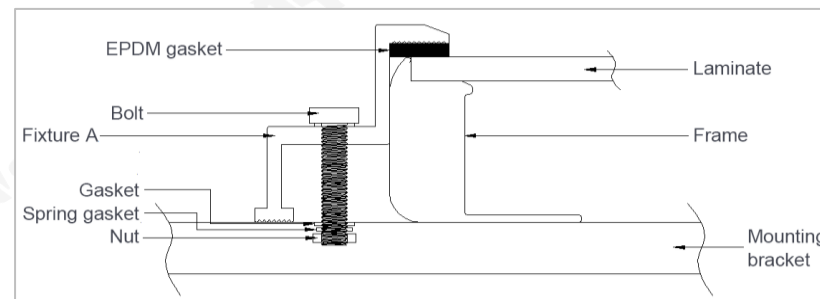


Fig. 5

### Middle fixture B:

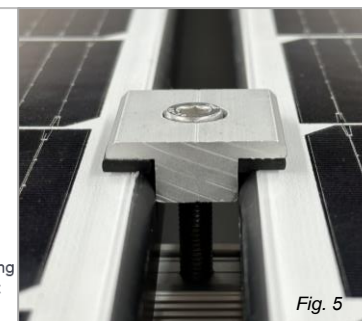
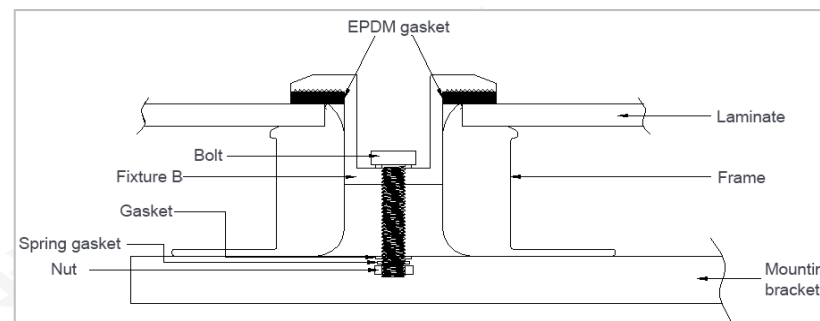


Fig. 5